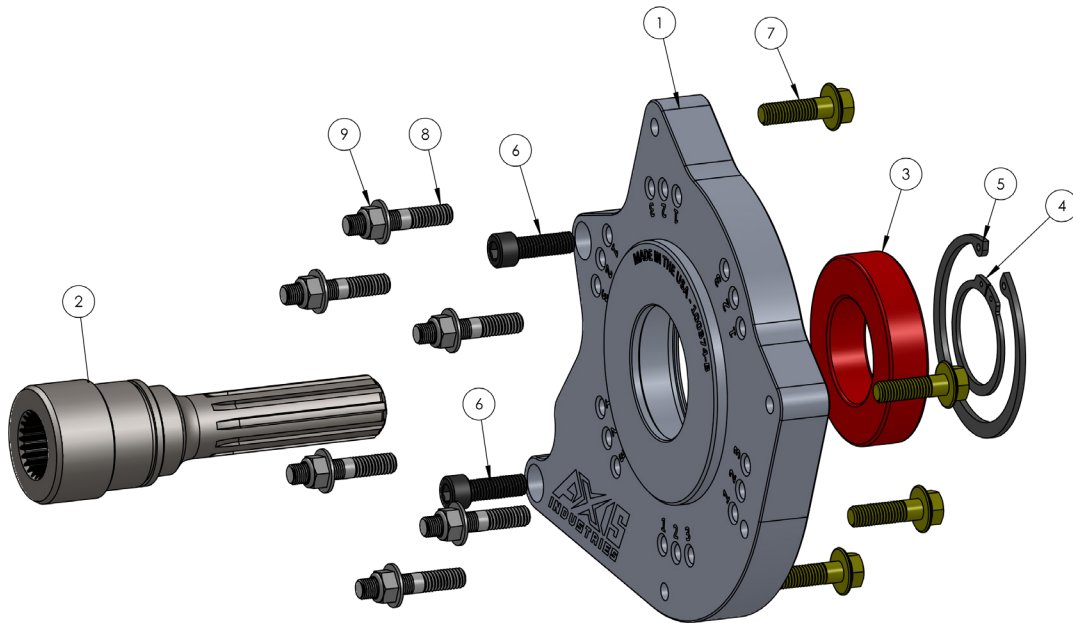




# LT230 TO 23 SPLINE JEEP ADAPTER

**IMPORTANT:** Thank you for purchasing a product from Axis Industries USA. We ask that you read through this entire document before proceeding with the installation. If you are not confident in your skills, please seek help from a professional to perform the installation. Upon arrival check your packages immediately to ensure that everything listed is included, and there is no damage from shipping. If anything is missing or damaged, or if you need technical assistance with the installation, call Axis Industries at 317-739-3390.

ITEM	PART No.	DESCRIPTION	QTY
1	100374	LT230 TO JEEP T/C ADAPTER PLATE	1
2	100373	SPUD SHAFT, LT230 TO JEEP 23 SPLINE	1
3	100377	6210 2RS JEM BEARING	1
4	100375	50MM EXTERNAL RETAINING RING	1
5	100376	90MM INTERNAL RETAINING RING	1
6	100559	M10x1.5 SHCS, 30MM LONG	2
7	100560	M10x1.5, 35MM LONG	4
8	100561	3/8" T/C STUD	6
9	100562	3/8"-24, FREE SPIN WASHER NUT	6



### GENERAL INFORMATION:

1. Install the bearing(3) and snap ring(5) into the adapter plate(1).
2. Install spud shaft(2). Install the snap ring(4) on the spud shaft.
3. Install Factory locating pin.
4. Install studs(8) by using the 2 nut method (see image).
5. Bolt up adapter. Cap head bolts(6): 40 lb/ft  
Hex bolts(7): 40 lb/ft

