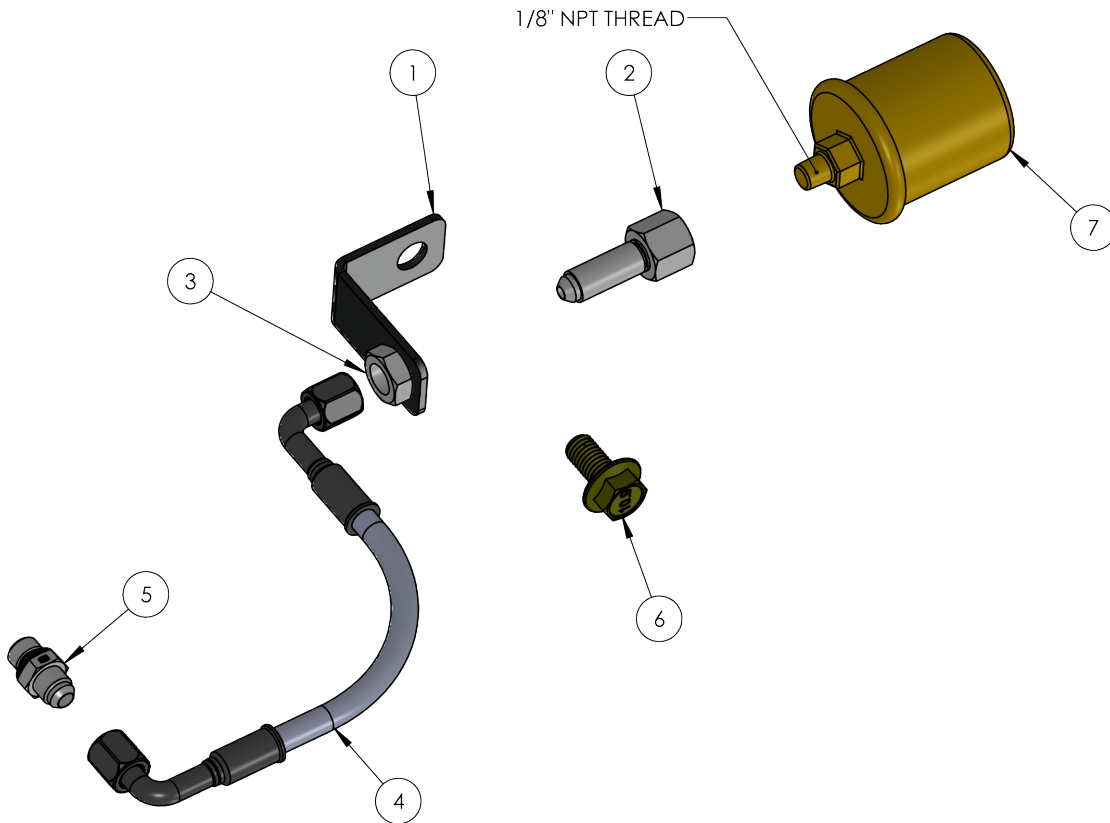




R2.8 OIL PRESSURE SENSOR KIT

IMPORTANT: Thank you for purchasing a product from Axis Industries USA. We ask that you read through this entire document before proceeding with the installation. If you are not confident in your skills, please seek help from a professional to perform the installation. Upon arrival check your packages immediately to ensure that everything listed is included, and there is no damage from shipping. If anything is missing or damaged, or if you need technical assistance with the installation, call Axis Industries at 317-739-3390.

ITEM	PART No.	DESCRIPTION	QTY
1	100239	R2.8 Oil Remote Oil Sensor Mounting Tab	1
2	100237	-4 Male JIC Bulkhead x 1/8" NPT Female	1
3	100238	-4 JIC Bulkhead Nut	1
4	100089	Assembled part in position	1
5	100236	-4 Male JIC x M10x1 Male Metric	1
6	100558	M10x1.5, 20MM Long	1
7		Not Included In Kit	0



GENERAL INFORMATION:

1. Remove Allen key plug on the back of the oil cooler, top position. Install item 5. **Note** do not over tighten, is easy to strip threads.
2. Assemble items 1, 2, 3, and 4 as in image. Attach assembly to item 5.
3. Using item 6, mount the assembly in the top hole above the engine mount.